

Your Local Okada Dealer



BREAKERS | TROMMEL SCREENING BUCKETS  
COMPACTORS | CRUSHERS  
GRAPPLES | CUTTERS | PULVERIZERS

**COUNT ON OKADA.**

[WWW.OKADAAMERICA.COM](http://WWW.OKADAAMERICA.COM)



Since 1995, Okada America, Inc. has been offering a wide variety of attachments through its parent company, Okada Aiyon located in Osaka, Japan.

Okada Aiyon was established in 1938 manufacturing a single line of breakers that has evolved into a global company producing a full line of demolition attachments.

The Okada family remains active in daily operations, still demands precision engineering with stringent quality control that ensures long product life and consistent quality output. These proven manufacturing guidelines are what drives Okada to become the global industry leader for hydraulic attachments.



**OREGON**

372 S SEQUOIA PKWY  
CANBY, OR 97013  
503.557.7033 | F 503.557.7779

**OHIO**

904 MEDINA RD.  
MEDINA, OH 44256  
330.239.2666 | F 330.239.3670

**TEXAS**

3575 WINDMILL RD. BLDG #2  
JOSHUA, TX 76058



**OS SERIES  
SCRAP SHEAR**





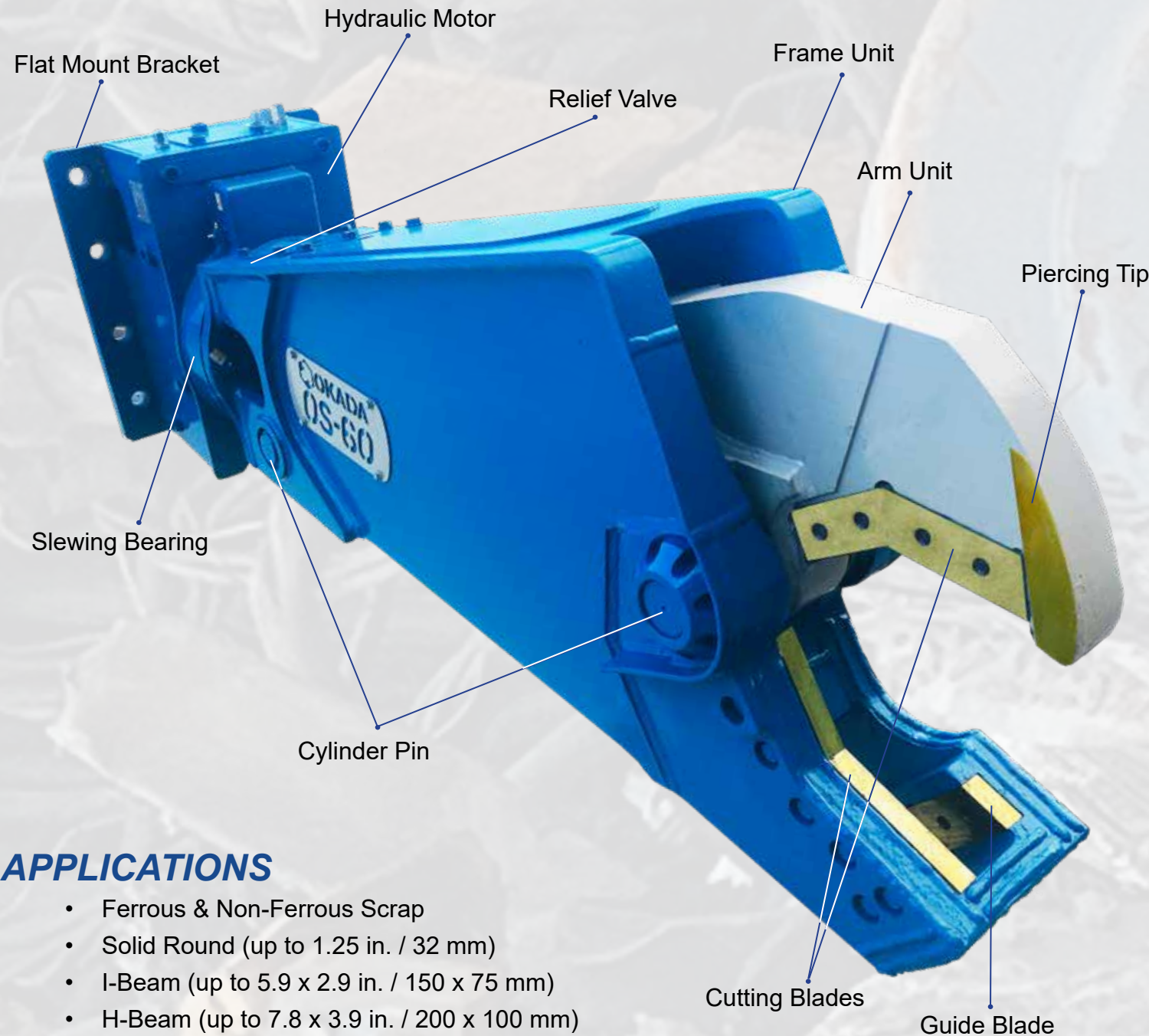
# SCRAP SHEAR

# COUNT ON OKADA.



Okada's OS Series Scrap Shear is a versatile shear made for cutting ferrous and non-ferrous scrap, concrete, pipe, solid round I-beams and plate materials. The OS140R Shear is perfect for the 13-20,000 lb class carrier which provides flexibility for hard to get to areas of demolition.

## FEATURES

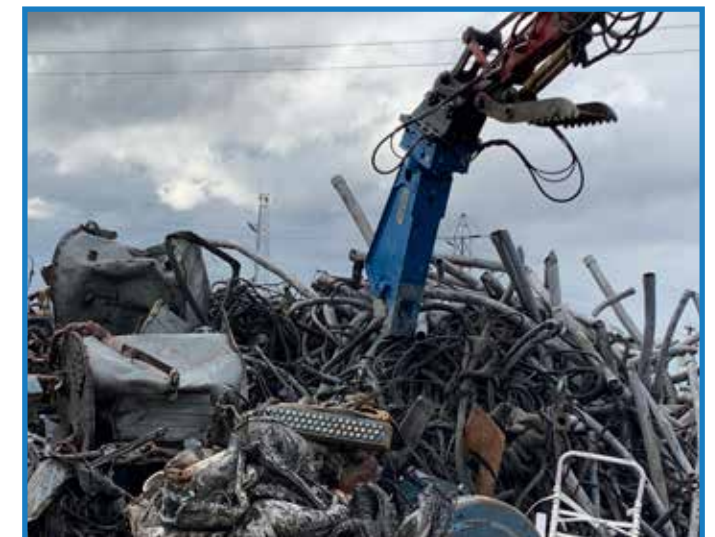


## APPLICATIONS

- Ferrous & Non-Ferrous Scrap
- Solid Round (up to 1.25 in. / 32 mm)
- I-Beam (up to 5.9 x 2.9 in. / 150 x 75 mm)
- H-Beam (up to 7.8 x 3.9 in. / 200 x 100 mm)
- Pipe (up to 5 in. / 127 mm)

## SPECIFICATIONS

	ROTATION TYPE	OS140R
<b>INFORMATION</b>		
Carrier Class	1000 lb	13 - 20
	m ton	6 - 9
Operating Weight	lb	1158
	kg	525
Overall Length	inch	64
	mm	1625
Overall Width	inch	25
	mm	625
Maximum Jaw Opening	inch	10
	mm	260
Jaw Depth	inch	12
	mm	300
<b>FORCE</b>		
Cutting Force at Throat	sh ton	159
	kN	1415
Cutting Force at Tip	sh tons	37
	kN	325
<b>JAW OPEN &amp; CLOSE</b>		
Required Oil Flow	gpm	26
	lpm	100
Auxiliary Circuit Relief	psi	3191
	bar	220
Internal Relief	psi	3046
	bar	210
<b>ROTATION</b>		
Required Oil Flow	gpm	2.6
	lpm	10
Auxiliary Circuit Relief	psi	1015
	bar	70
Internal Relief	psi	870
	bar	60
Case Drain Required (HR)	y / n	yes
Maximum RPM	RPM	10
<b>UMB</b>		
Mounting	PM / FM	FM
Bolt Pattern	Okada	303B



Specifications are subject to change without notice. Specifications assume the use of an Okada Universal Pin Mount.